



## EuropeanaLocal: overview, progress, aggregation

Olga McHenry  
Brussels, 16 Dec 09



# What is EuropeanaLocal?

**EuropeanaLocal** is a content contributing project of Europeana-family financed by the European Commission



# Who are the partners of EuropeanaLocal?

**Local and regional** cultural heritage institutions (**cross domain**) and some of the national -

**32 partners** covering all Member States plus Norway.

**In Belgium – Provincie Limburg, Jef Malliet**

in cooperation with **Oost-Vlaanderen, Mieke Van Doorselaer**



---

# Main objectives of EuropeanaLocal (1)


---

## Aggregation

*EuropeanaLocal supports and encourages establishment of the regional and national aggregators but does not establish any of its own*

# www.erfgoedplus.be

ErfgoedPlus Erfgoedplus.be

 erfgoedplus.be  
vind meer dan je zoekt

over erfgoedplus.be contact help

Zoek hier naar erfgoed uit Limburg, Vlaams-Brabant en Leuven.

Verder zoeken Rubens Persoon **ZOEKEN**

**Productie-eeuw**

17 18 19

**Locatie**

Locatie

Limburg (Provincie)	3
Vlaams-Brabant (Provincie)	1

**Suggesties**

**Materiaal**

canvas 2

**Vervaardiger** OR

De Dieudonné 1  
 Rubens 1  
 Rubens, Peter Paul 3

**Periode/stijl**


barok 1


**Filters** [nieuwe zoekopdracht](#)


Persoon   
rubens

**Zoekresultaat**

Sorteren Titel - a-z resultaat 1 - 4 van 4

**Titel:** De wonderbaarlijke visvangst  
**Object:** schilderijen  
**Vervaardiger:** Rubens, Peter Paul (naar), kunstschilders: De Dieudonné  
**Productiedatum:** 1800 - 1899  
**Gebouw:** M (Leuven)

**Titel:** Maria  
**Object:** schilderijen  
**Vervaardiger:** Rubens, Peter Paul  
**Productiedatum:** 1614 - 1700  
**Periode/stijl:** barok  
**Gebouw:** Kerk Sint-Petrus (Halen)

**Titel:** Verdrag van Angoulême (30 april 1619)  
**Object:** schilderijen  
**Vervaardiger:** Rubens (naar)  
**Productiedatum:** 1801 - 1900  
**Gebouw:** Museum Vlaamsche Minderbroeders (Sint-Truiden)

---

## Success story

---

**Erfgoedplus.be** portal and the aggregation that Limburg is doing - success story and good practice

## Main objectives of EuropeanaLocal (2)

- Promotion of standards and infrastructure supported by Europeana.
- Support to Europeana in farther development of its service.
- Support to **local and regional** content providers in establishing Europeana compliant infrastructure.
- Promotion of farther digitization.



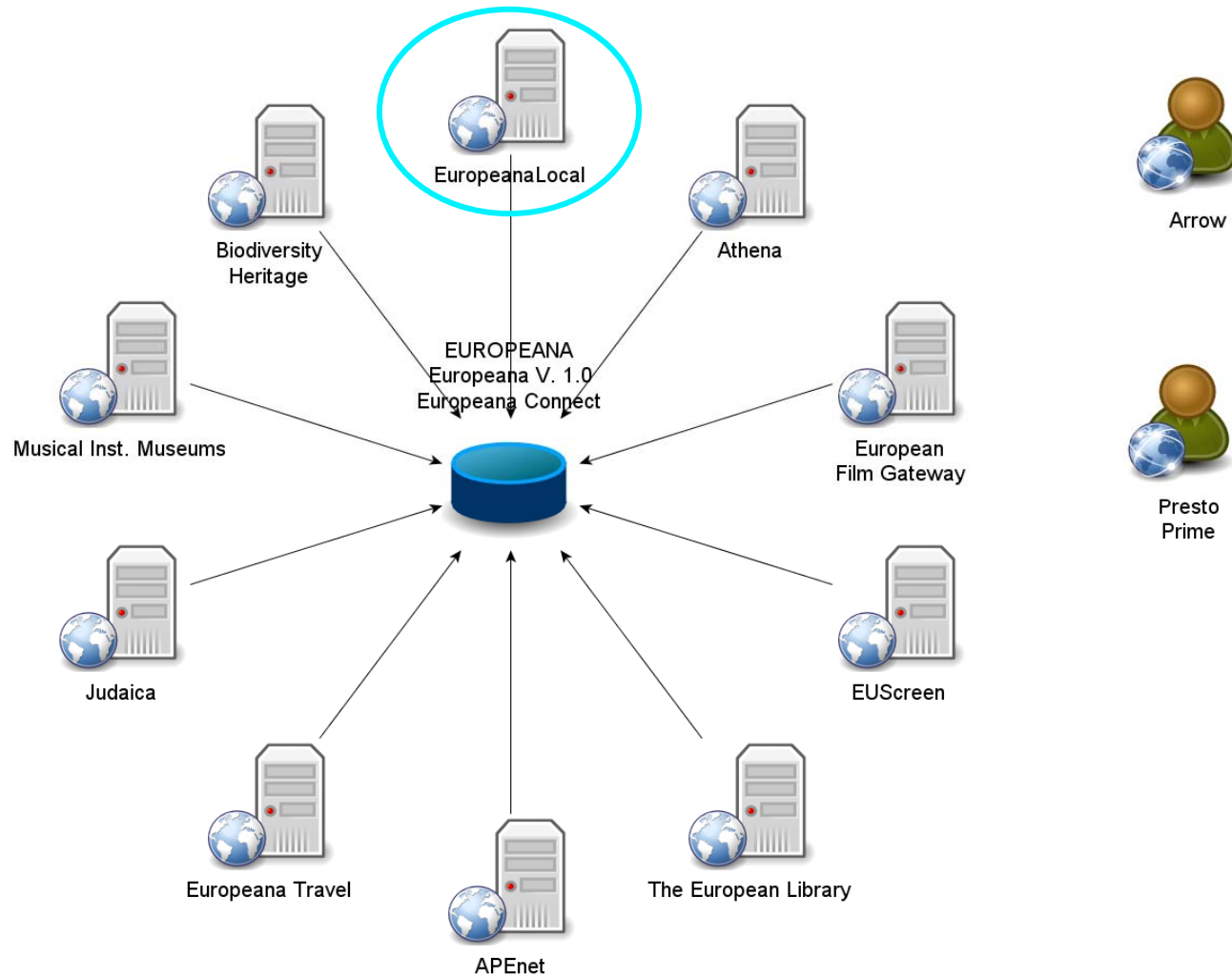
---

# Focus of EuropeanaLocal

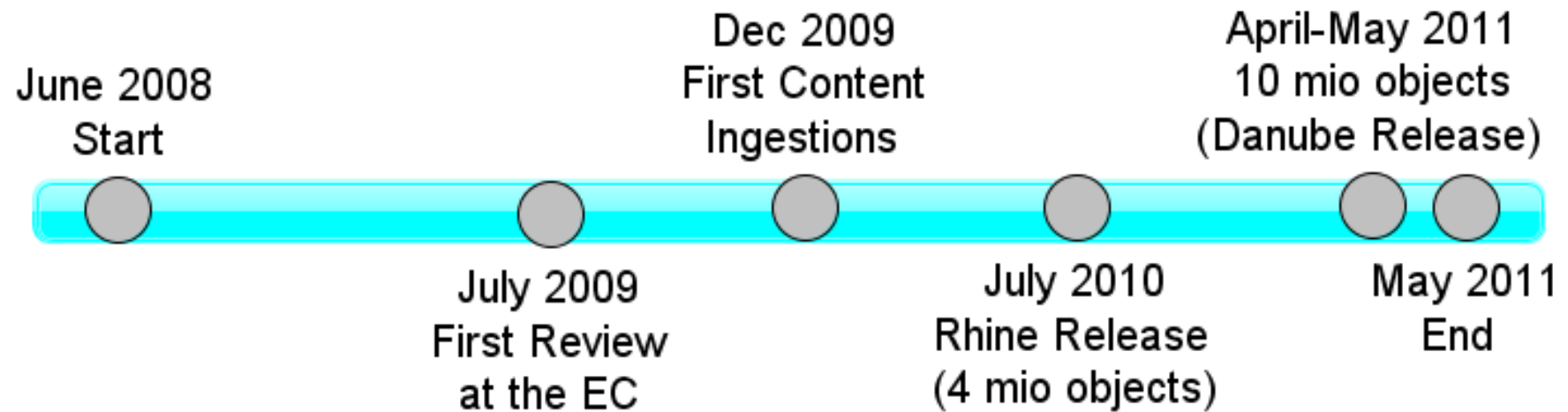
---

## Local and Regional level

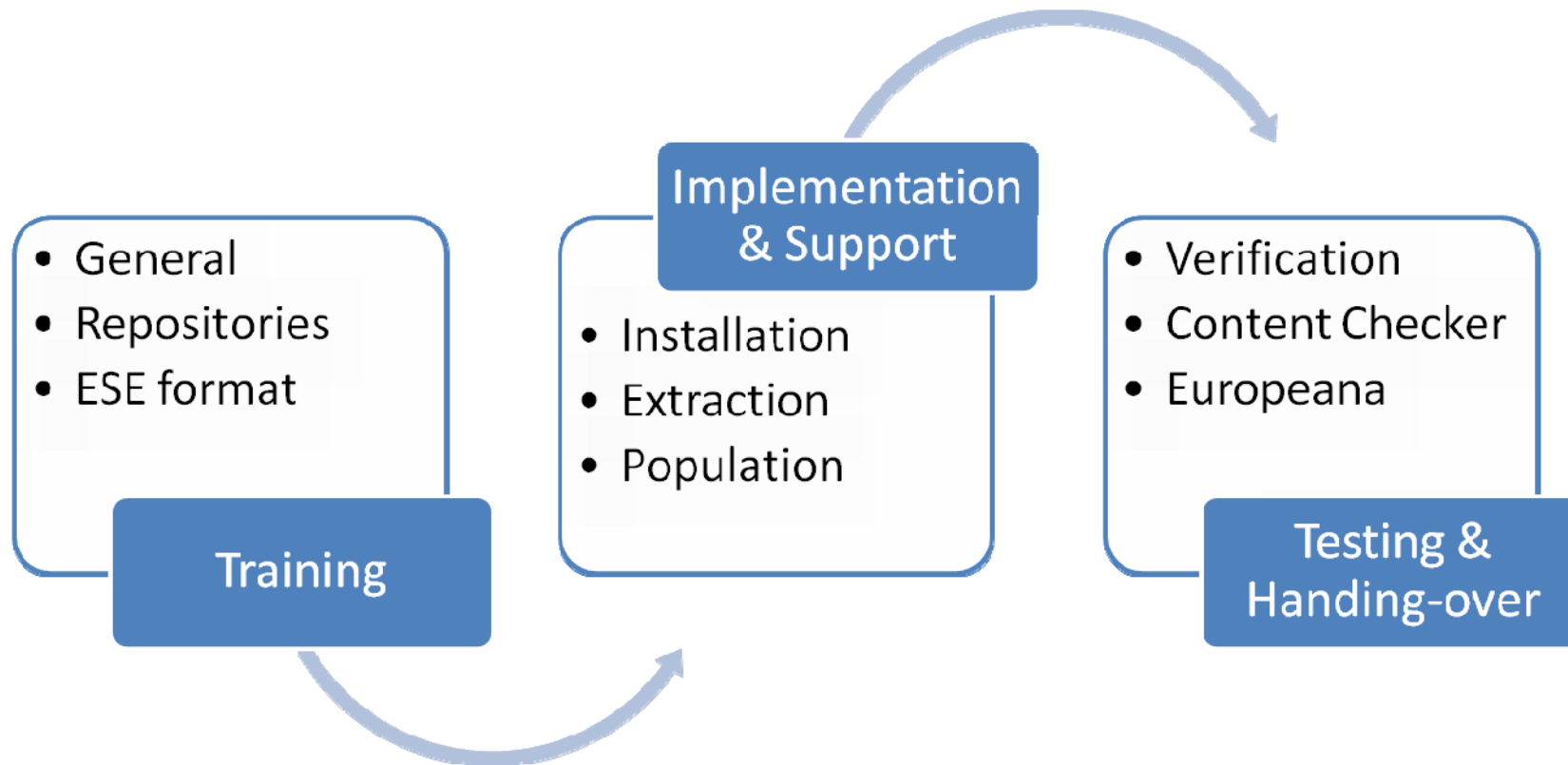
# Place of EuropeanaLocal in Europeana (as of Dec 09)



# EuropeanaLocal timeline



# What was done at the preparation phase?



# Content ingestion phase

Q3-Q4/2009

- Existing OAI-PMH repositories \*)
- "Mature" CPs

Q3-/2010 –  
Q1/2011

- Third group of CPs

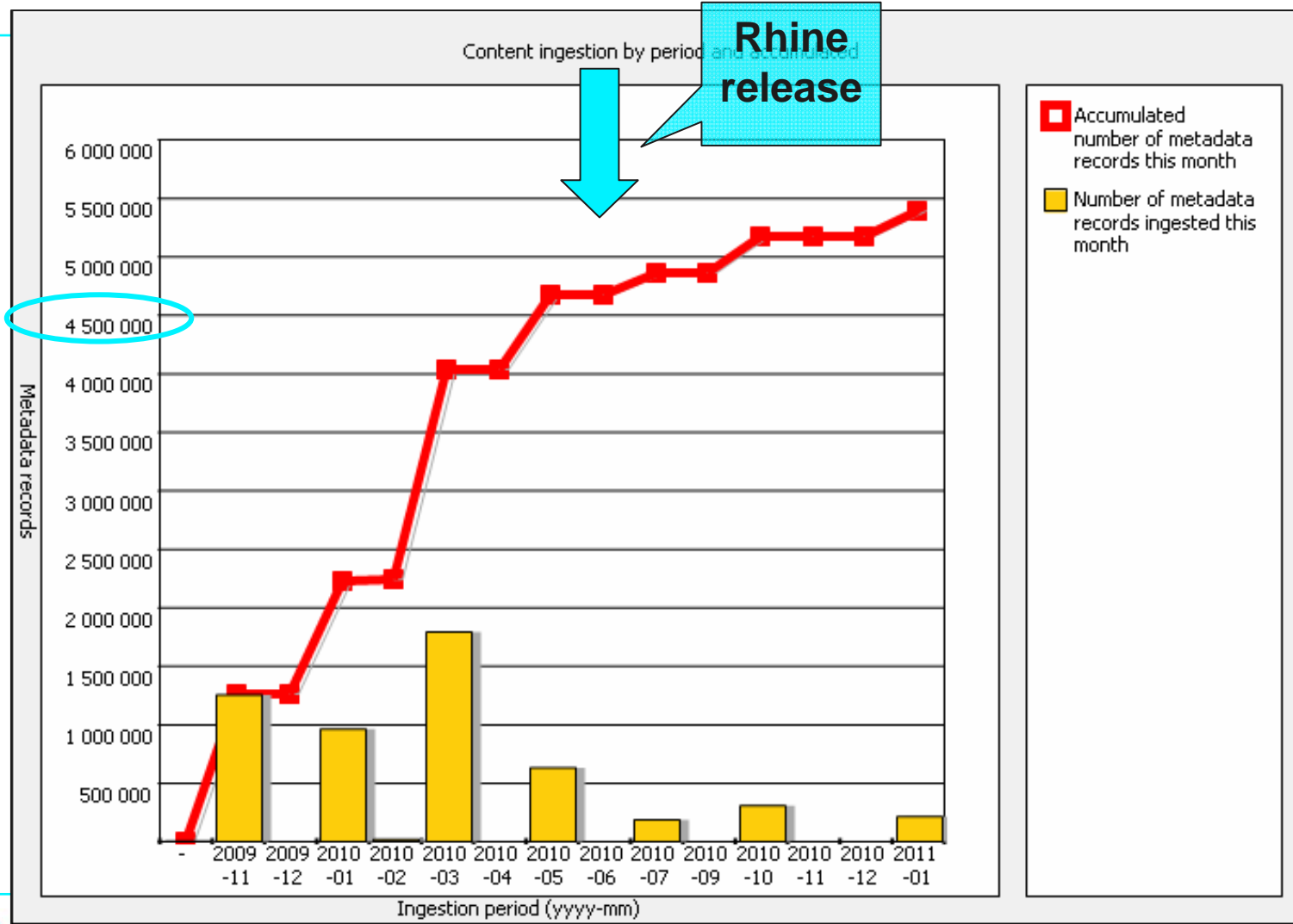


Q1-Q2/2010

- Second group of CPs

Completion  
in April 2011

# Content ingestion numbers



# Content numbers

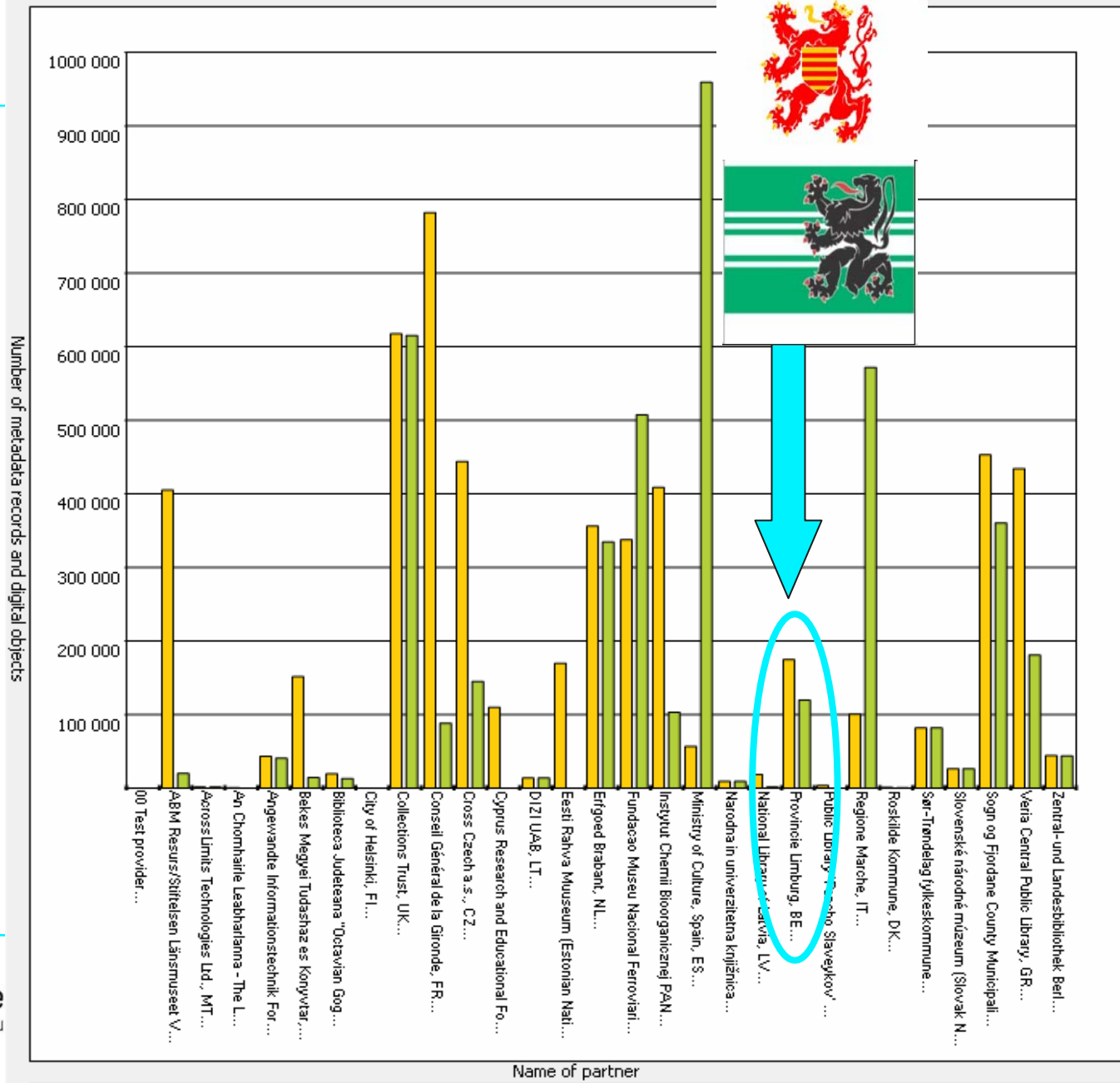
- Rhine Release - approximately 4 million items (promised 3 million items)

EuropeanaLocal is the main content provider for the Rhine release (!)

- By June 2011 – 10 million items (forecast)



Metadata records and Digital objects by Partner



## Currently

- 6-7 partners are fully ready to be harvested
- First harvesting accounts for 400.000-500.000 items
- Harvesting starts now

# Plans

- 4 million items to Rhine release
- 10 million items by the end of the project
- 27 fully operational repositories
- 100 new content providers

---

*Dank u wel! Merci!*

---

**Olga McHenry**

**[www.europeanalocal.eu](http://www.europeanalocal.eu)**

**[om@europaone.eu](mailto:om@europaone.eu)**

